



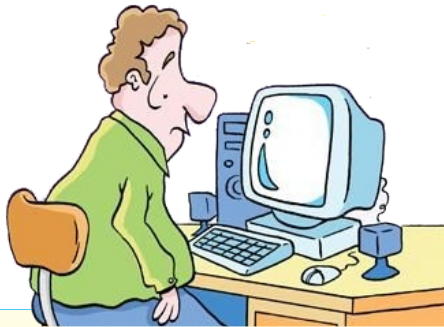
APPLICATION PROCEDURE

1ST TERM AY 2022-2023

Before applying for online WCE consider these

TECHNICAL REQUIREMENTS:

- Desktop or Laptop computer (Mobile phones and Tablets are NOT allowed)
- CPU should be at least Core i5
- Web camera should have a resolution of at least 720p
- Microphone
- STABLE internet connection. Internet speed of at least 10 Mbps



Are you fully equipped for an online WCE?

Updated as of October 1, 2022



Disrupted internet connection, whether temporary or permanent, encountered in the middle of the online WCE, will automatically forfeit the test and result in RETAKE.

Accomplish

the application form

<http://graduateschool.ust.edu.ph/wp-content/uploads/2014/10/wce-form-fillable.pdf>

What courses should I select for WCE?

M.A./M.S. students must choose six (6) courses (2 core and 4 specialization)

Ph.D./Ed.D students must choose eight (8) specialization courses

Note: On-going courses are not allowed.

Pay WCE fee through Treasury Department



- Read OVRF Memo 19 [CLICK HERE](#)
- Print WCE payment slip [DOWNLOAD](#)
- Proceed to Student Accounts Section for clearance and Window 18 for payment (2nd Floor, UST Main Building)

How much is the WCE application fee?

MA/MS: Php 3,500.00

PhD/EdD: Php 4,000.00

[view approved Table of Fees \(AY 2022-2023\)](#)

SUBMIT

Pdf copies of your grades, WCE application form and copy of official receipt by uploading these files to link below:

<https://forms.gle/q9F7ErCqB8u4KFK1A>

How will I know if my submission is successful?

You will receive an email confirmation no more than three (3) working days after submission.



Check our website

<http://graduateschool.ust.edu.ph/> for the posting of your WCE schedule on November 4, 2022.

Two courses will be allotted per day (9:00AM - 11:30AM & 1:30PM - 4:00PM).

When is the WCE?



MA/MS: November 14, 21, & 28, 2022

PhD/EdD: November 14, 21, 28 December 5, 2022

Download



a copy of your grades from your MyUste Student Portal

Requirements for M.A./M.S.: 30 Academic

- 6 units of prerequisite courses
- 9 units of core courses
- 15 units of specialization courses

Requirements for Ph.D./Ed.D.: 39 Academic Units

- 9 units of philosophy courses/applied courses
- 30 units of specialization courses

Am I qualified to take the WCE?



Deadline of WCE Application is on October 20, 2022.

Schedule of Online WCE Orientation is on November 5, 2022 (5:00PM to 8:00PM). The link for the orientation will be sent to your email address by October 29, 2022. All WCE test-takers are REQUIRED to attend the Orientation.