

# Pre-Enlistment & Advising

2nd Term AY 2021-2022

## is now **ONGOING!**

### WHAT SHOULD I DO?



- Fill out Pre-Enlistment Google Form (Please see PAGE 2).
- Wait for an acknowledgment.

**Note: You can only fill out the Pre-Enlistment form once. If you would like to make modifications, kindly reach out to our staff through our Live Online Support: <https://bit.ly/USTGS-LiveOnlineSupport>**

### IMPORTANT!

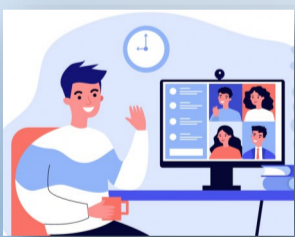
- A passing WCE grade is required to register for TW/DW1. In the absence of this requirement, the student must fill out the waiver ([click here to download the file](#)) should he/she wish to take TW/DW1.
- Students with approved WCE deferment this 1st Term AY 2021-2022 may register for TW/DW2 upon completion of the waiver ([click here to download the file](#)).
- Students who wish to enroll TW3/DW3/DW4 should have fulfilled the following requirements:
  - Within Residency (Residency period for MA/MS is 5 years; PhD/EdD is 7 years). Students beyond residency must have taken the corresponding reactivation courses required.
  - Completed ALL academic requirements including TW/DW1 & 2, Practicum & Bridging courses (if any)
  - Passed the Written Comprehensive Examination
- Accomplished waivers must be submitted to [research.gs@ust.edu.ph](mailto:research.gs@ust.edu.ph)

### WHAT HAPPENS TO MY PRE-ENLISTMENT FORM?



- Your form shall be forwarded to the Program Lead for review and approval.
- If you do not receive any feedback from your Program Lead, your pre-enlistment is deemed approved. Your Program Lead shall contact you directly, should there be questions with your pre-enlistment.
- Approved courses will be encoded in the system on or before **January 7, 2022**. Once encoded, your courses will be visible in your MyUSTe Student Portal account.

### HOW MAY I SPEAK WITH MY PROGRAM LEAD?



For enrollment concerns (if any), you may consult with your Program Lead on **December 14, 2021 (5:00 – 7:00PM)** through our Live Online Support: <https://bit.ly/USTGS-LiveOnlineSupport>

**Note: OLD students are requested to use their USTGSuite accounts to access the meeting link.**

Wait!



Kindly wait for further announcements this **January 5, 2022** on the following:

- **Schedule of enrollment**
- **Online enrollment procedure**
- **Instructions for changing/dropping/adding of courses**

**Deadline of pre-enlistment is December 18, 2021**

<b>NEW STUDENTS (All Programs)</b>	<b>Google Form Link</b>
	<a href="https://forms.gle/q3KSjKWr6P47gcvi9">https://forms.gle/q3KSjKWr6P47gcvi9</a>

<b>Program (OLD/RETURNING Students)</b>	<b>Google Form Link</b>
MS Biology/ MS Microbiology/ Biological Education/ PhD Biology	<a href="https://forms.gle/xAyg8UhSRDPgbYms9">https://forms.gle/xAyg8UhSRDPgbYms9</a>
MS Chemistry/ Chemistry Education/ PhD Chemistry	<a href="https://forms.gle/kGa6ARuP8i4tZ1HQ9">https://forms.gle/kGa6ARuP8i4tZ1HQ9</a>
MS Pharmacy/ PhD Pharmacy	<a href="https://forms.gle/r9u3jbbmw3sutdVH8">https://forms.gle/r9u3jbbmw3sutdVH8</a>
MS Medical Technology/PhD Medical Technology	<a href="https://forms.gle/M9LsbTJvoZN3vTfJ8">https://forms.gle/M9LsbTJvoZN3vTfJ8</a>
MS Human Resource Management/ PhD Human Resource Management	<a href="https://forms.gle/R8uvA9YeJc63xtXS6">https://forms.gle/R8uvA9YeJc63xtXS6</a>
MBA/MBA Entrepreneurship/ PhD Commerce	<a href="https://forms.gle/u79V87c2Nb9T56vJ8">https://forms.gle/u79V87c2Nb9T56vJ8</a>
MS Architecture/ PhD in Built Environment Architecture	<a href="https://forms.gle/qgo7n6zJftKG7i66A">https://forms.gle/qgo7n6zJftKG7i66A</a>
MA Bioethics	<a href="https://forms.gle/7rURFBaqH2jFScBm8">https://forms.gle/7rURFBaqH2jFScBm8</a>
MA Theology/MA Theology-Social Pastoral Communication/PhD Theology	<a href="https://forms.gle/fdtXwpVuhwiB29b26">https://forms.gle/fdtXwpVuhwiB29b26</a>
MA Literature/PhD Literature	<a href="https://forms.gle/AN5t47eurG14Xtqs7">https://forms.gle/AN5t47eurG14Xtqs7</a>
MA Philosophy/PhD Philosophy	<a href="https://forms.gle/cxzs8H6XY5gVnXvGA">https://forms.gle/cxzs8H6XY5gVnXvGA</a>
MA Political Science/ PhD Political Science	<a href="https://forms.gle/ULX4cusUkf6Jtx8RA">https://forms.gle/ULX4cusUkf6Jtx8RA</a>
MA Public Administration/ PhD Public Administration	<a href="https://forms.gle/9DpK5i4ttueR6X8RA">https://forms.gle/9DpK5i4ttueR6X8RA</a>
MA Clinical Psychology/MA Industrial Psychology/PhD Clinical Psychology	<a href="https://forms.gle/QcXMMNJsjmzDLm6TA">https://forms.gle/QcXMMNJsjmzDLm6TA</a>
MA Guidance and Counseling	<a href="https://forms.gle/dbm8UpSNYpdYrJN6A">https://forms.gle/dbm8UpSNYpdYrJN6A</a>
MA Economics/PhD Economics	<a href="https://forms.gle/2RU9gWxhQgUkqm9C8">https://forms.gle/2RU9gWxhQgUkqm9C8</a>
MA Development Studies/ PhD Development Studies	<a href="https://forms.gle/FdZK3AWJK6DXDhnS7">https://forms.gle/FdZK3AWJK6DXDhnS7</a>
MA English Language Studies/ PhD English Language Studies	<a href="https://forms.gle/YsSeU2zjcmGJr8eq6">https://forms.gle/YsSeU2zjcmGJr8eq6</a>
MA Communication/ MA Marketing Communication	<a href="https://forms.gle/6ai5xXRcRREheCQu7">https://forms.gle/6ai5xXRcRREheCQu7</a>
MA History/PhD History	<a href="https://forms.gle/r76nEFSdS5c9zEa56">https://forms.gle/r76nEFSdS5c9zEa56</a>
MA Music/PhD Music	<a href="https://forms.gle/KqzAK9U5rtgijSg38">https://forms.gle/KqzAK9U5rtgijSg38</a>
MA Fine Arts/ MA Cultural Heritage Studies	<a href="https://forms.gle/63FVtEA9Ce2Fx1Rw5">https://forms.gle/63FVtEA9Ce2Fx1Rw5</a>
MS Occupational Therapy / MS Physical Therapy	<a href="https://forms.gle/dRyfykCqqu5PXXZG8">https://forms.gle/dRyfykCqqu5PXXZG8</a>
MA Nursing/MA Hospital Administration	<a href="https://forms.gle/xG1tr5C2XVixL1dB8">https://forms.gle/xG1tr5C2XVixL1dB8</a>
MS Applied Physics major in Med Physics/ MS Food Science	<a href="https://forms.gle/bkRjN7NWzav2DzQu7">https://forms.gle/bkRjN7NWzav2DzQu7</a>
MS Chemical Engineering/MS Electronics Engineering/MS Management Engineering	<a href="https://forms.gle/GXeD3td3deMj5ppH9">https://forms.gle/GXeD3td3deMj5ppH9</a>
MA Education/PhD Education/Doctor of Education (EDD)	<a href="https://forms.gle/qUedHmr5pWcQdovk8">https://forms.gle/qUedHmr5pWcQdovk8</a>
MA Library and Information Science/MA Health Profession Education	<a href="https://forms.gle/q7aauQZvQo5HYx629">https://forms.gle/q7aauQZvQo5HYx629</a>
MA Creative Writing/MA Journalism	<a href="https://forms.gle/1oqK5fQKDmDfNLe26">https://forms.gle/1oqK5fQKDmDfNLe26</a>

For inquiries, kindly login to our GS Live Online Support: <https://bit.ly/USTGS-LiveOnlineSupport>